

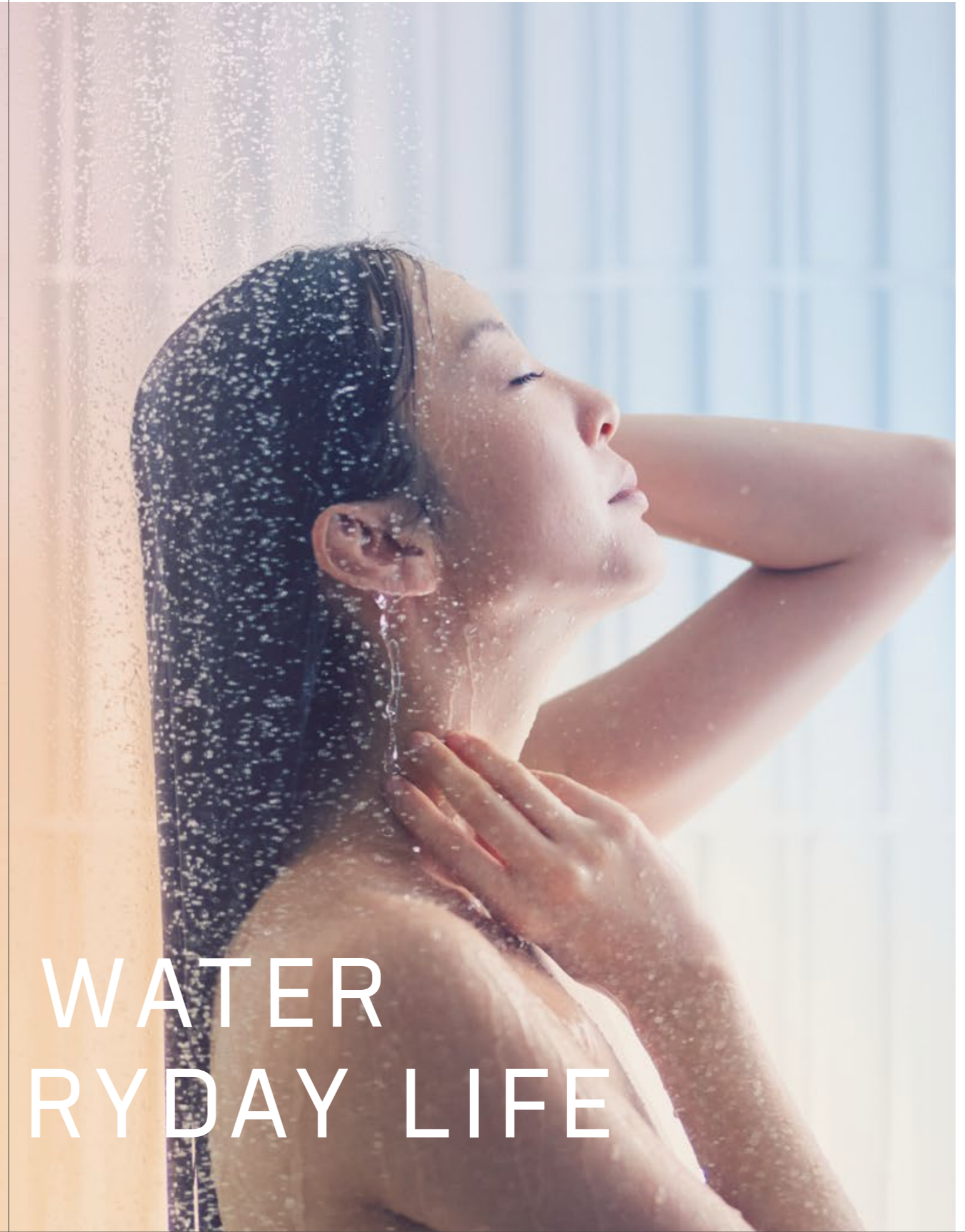
## S200 LINE PRODUCT BOOK



From ancient times,  
the Japanese have used water  
to reset one's mind.  
Refreshing the soul with sublimely  
pristine water, indulging in the  
peaceful relaxation of bathing,  
Japanese people wash away  
their hesitations and regain the  
strength to charge on.  
It is a part of everyday life,  
the time and ritual to feel reborn.

INAX transforms the bathroom  
experience by creating beautiful,  
innovative products  
delivering Japan's rituals of water  
that make everyday life easier,  
healthier, and more enjoyable,  
enabling everyone to live well.

THE RITUALS OF WATER  
TRANSFORM EVERYDAY LIFE



SIMPLE. MODERN. FUNCTIONAL.  
THE PERFECT BATHROOM  
FOR URBAN LIFE.



Through decades of experience developing bathrooms in the small island country of Japan, INAX has mastered the technologies to achieve maximum comfort while managing compact spaces.

Simple yet beautiful.  
Functional and comfortable.

With a modern design, INAX S200 LINE offers the Maxi-Compact bathroom that is just right for people leading a busy, urban lifestyle. Featuring all the essential functions you need in your bathroom, its thoughtful design will make your everyday life easier and more enjoyable.

Add a touch of luxury to your daily life. Treat yourself to the comfort of a perfectly coordinated bathroom with S200 LINE.



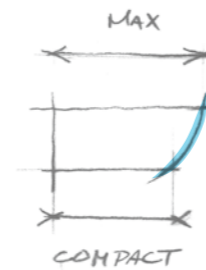
# MAXI-COMPACT: THE BATHROOM DESIGNED FOR URBAN LIFESTYLE

At INAX, we believe in designing the overall bathroom space to transform people's everyday life.

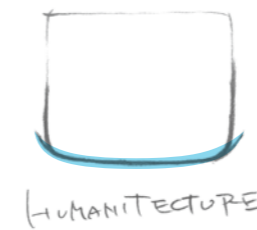
In a process called "presearch," we observe, listen, and gather insights in the target markets to understand how bathrooms are used. We then analyze

and identify users' unarticulated needs and everyday frustrations and design a better experience. Maxi-Compact, S200 LINE's design concept born through this approach, offers the perfect bathroom for the urban lifestyle, maximizing both comfort and functionality within compact spaces. Applying INAX's human-centric innovation and

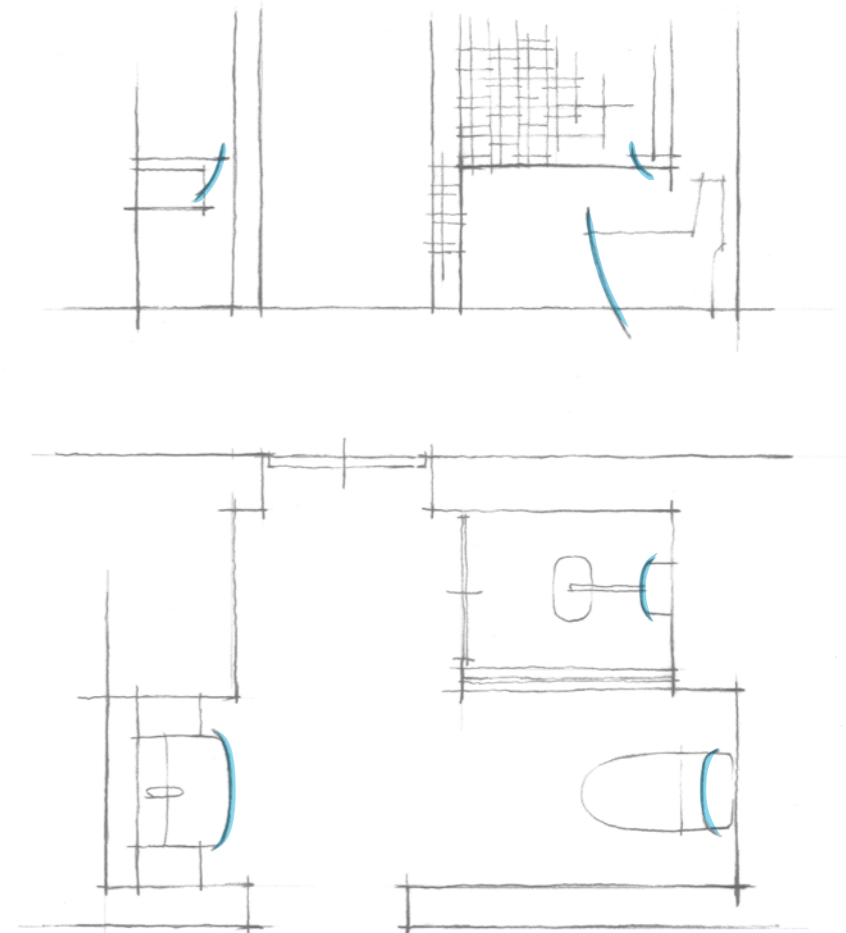
insightful design, Maxi-Compact achieves the ultimate balance of usability, beauty, and spaciousness in modest-size bathrooms. With a full line-up of thoughtful and reliable products that create a modern, totally coordinated bathroom, S200 LINE supports and improves the daily lives of those leading a busy urban lifestyle.



Side View: The products gradually reduce volume towards the bottom in a curved form, making the bathroom feel spacious.



Top View: The front side of the basin is designed with a curve, which makes it safer, approachable, and easy to use.





# INSIGHTFUL DESIGN

## DESIGN VALUES

The S200 LINE is developed based on INAX's three core brand Design Values. Using these values as a guide in all product design, we ensure the

quality of our products and offer a total experience that is uniquely different from typical product designs.

### ESSENCE

Pursues quality and essential values users seek in the product, driving simplicity through honesty, purity, and function.

### SOPHISTICATION

Ensures quality and craftsmanship in detail, fit, feel, and finish, intelligently organizing every element with a respect for etiquette.

### THOUGHTFULNESS

Enables a considered design that is useful, intuitive, and caring, based on a deep understanding of user needs.

## SIGNATURE ELEMENTS

Signature Elements are aesthetic codes that illustrate the philosophies and values underlying the INAX brand, nurtured over the years in Japan. Their overarching theme, "humanitecture," is delicately balanced to enhance the interactions between INAX products and the users, while ensuring that

the products fit naturally into their surrounding architecture. Being the brand's design DNA, the Signature Elements ensure that all INAX products have a consistent look and help make the bathroom a fully coordinated, designed space. The S200 LINE mainly features TENSION in the product designs.

### TENSION



Inspired by the surface tension of water, TENSION has an embedded function and acts as a guard to water; its symmetrical incline gently repels liquid.

### SQUOVAL



A hybrid of the friendly, human oval shape and the square with structure and architectural relevance, SQUOVAL connects people with architecture.

### VOLCANO

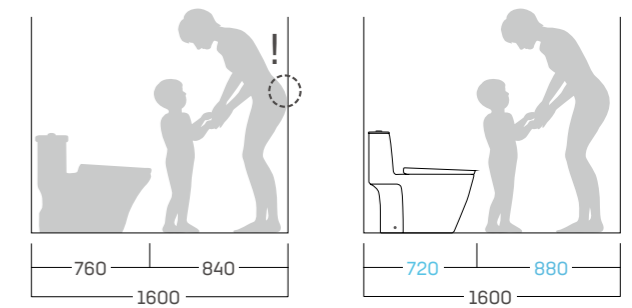


VOLCANO invites interaction and intuitively guides the user to the point of importance. It is easy to clean and maintain and is robust yet elegant.

# ONE-PIECE TOILET

The S200 LINE one-piece toilet offers a new smart combination of comfort and compactness specifically designed for urban living, where bathroom space may be limited.

The toilet is slightly shorter in depth than typical toilets of similar grade, which makes the bathroom spacious and easy to move around. At the same time, it is designed with a wider seat area for additional comfort, which has been verified through rigorous comfortability tests.



Typical toilets of similar grade

INAX S200 LINE toilets

Compared to typical toilets of similar grade, S200 LINE toilets allow more clearance at the front, making it easier to move around.



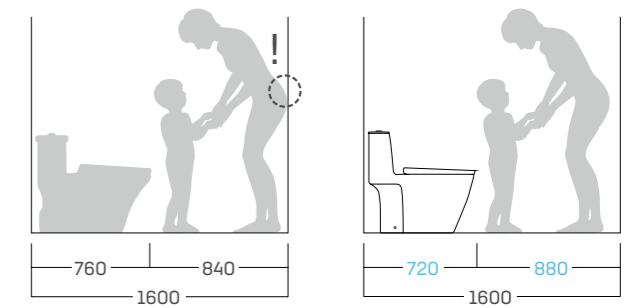
The water-saving dual flush buttons indicate the INAX Blue color when flushing, showing which function is in use and giving a hygienic impression. The Powerful Vortex flush ensures that nothing is left behind. The toilet is made with INAX's proprietary AQUA CERAMIC technology, which prevents

the attachment of waste and the build-up of black watermarks. As the toilet bowl is rimless, it will only require a quick sweep inside the bowl to keep the toilet shiny, liberating you from the burden of daily toilet cleaning.

# CLOSE COUPLED TOILET

The S200 LINE close coupled toilet offers a new smart combination of comfort and compactness specifically designed for urban living, where bathroom space may be limited.

The toilet is slightly shorter in depth than typical toilets of similar grade, which makes the bathroom feel spacious and easy to move around. At the same time, we designed it with a wider seat area, the comfort of which when seated has been verified through rigorous comfortability tests.



Typical toilets of similar grade

INAX S200 LINE toilets

Compared to typical toilets of similar grade, S200 LINE toilets allow more clearance at the front, making it easier to move around.



The water-saving dual flush buttons indicate the INAX Blue color when flushing, showing which function is in use and giving a hygienic impression. The Powerful Vortex flush ensures that nothing is left behind. The VOLCANO shape featured in the section connecting the tank with the toilet makes it easy to clean. The toilet is

made with INAX's proprietary AQUA CERAMIC technology, which prevents the attachment of waste and the build-up of black watermarks. As the toilet bowl is rimless, it will only require a quick sweep inside the bowl to keep the toilet shiny, liberating you from the burden of daily toilet cleaning.

# SEMI-COUNTERTOP BASIN

Thoughtfully designed S200 LINE semi-countertop basin offers superior functionality of all that you need - and more - without sacrificing anything.

With the semi-countertop structure that allows efficient use of the bathroom space, it is compact yet has a sizable rimmed deck to place daily use items such as a soap dish or a toothbrush holder. Designed with INAX's expertise and craftsmanship, the basin's shape and the depth prevent water from splashing out, which is ideal for multi-purpose use such as handwashing clothes.

The considered use of TENSION at the front of the basin and curved corners derived from other Signature Elements allows a fully coordinated look as well as make the product safer, approachable, and easy to use. The durable basin is also made with our AQUA CERAMIC technology that prevents dirt from attaching to the surface, making it effortless to maintain. Combined with the

perfectly matching S200 LINE basin mixer, it is sure to give you the satisfaction of having an aesthetically attractive and functional bathroom that makes everyday life easier and more enjoyable.





## WALL-HUNG BASIN

The S200 LINE wall-hung basin offers superior functionality for everyday life.

It is compact yet has a sizable rimmed deck to place daily use items such as a soap dish or a toothbrush holder. Designed with INAX's expertise and craftsmanship, the basin's shape and the depth prevent water from splashing out, which is ideal for multi-purpose use such as handwashing clothes. The durable basin is also made with our AQUA CERAMIC

technology that prevents dirt from attaching to the surface, making it effortless to maintain. Combined with the perfectly matching S200 LINE basin mixer, it is sure to give you the satisfaction of having an aesthetically attractive and functional bathroom that makes everyday life easier and more enjoyable.



## BASIN MIXER

With a modern design, the S200 LINE basin mixer has an easy to grip handle, slightly indented underneath.

The built-in aerator angle is adjustable, making it compatible with a vast range of basins. The spout is

set at a slightly higher position to ensure the best experience when washing items in the basin. The use of VOLCANO at the foot of the faucet and other areas makes it easy to clean and maintain. The INAX Blue activation color appears when the water is running, ensuring an intuitive use.



As the aerator angle can be adjusted, the mixer will suit any basin perfectly.



# EXPOSED SHOWER SYSTEM



With a thoughtful Japanese design that maximizes space utilization, the S200 LINE exposed shower system comes with a convenient prefixed tray to place shampoo and other necessities for you to enjoy your shower.

It also has a hook to hang and dry a bathing sponge after use. The shower system diverter has an intuitive design that makes it easy to switch between the overhead and hand showers, and the INAX Blue activation color appears on the control lever when the shower is in use. The large SQUOVAL overhead shower offers a wider coverage that provides a comfortable, relaxing full-

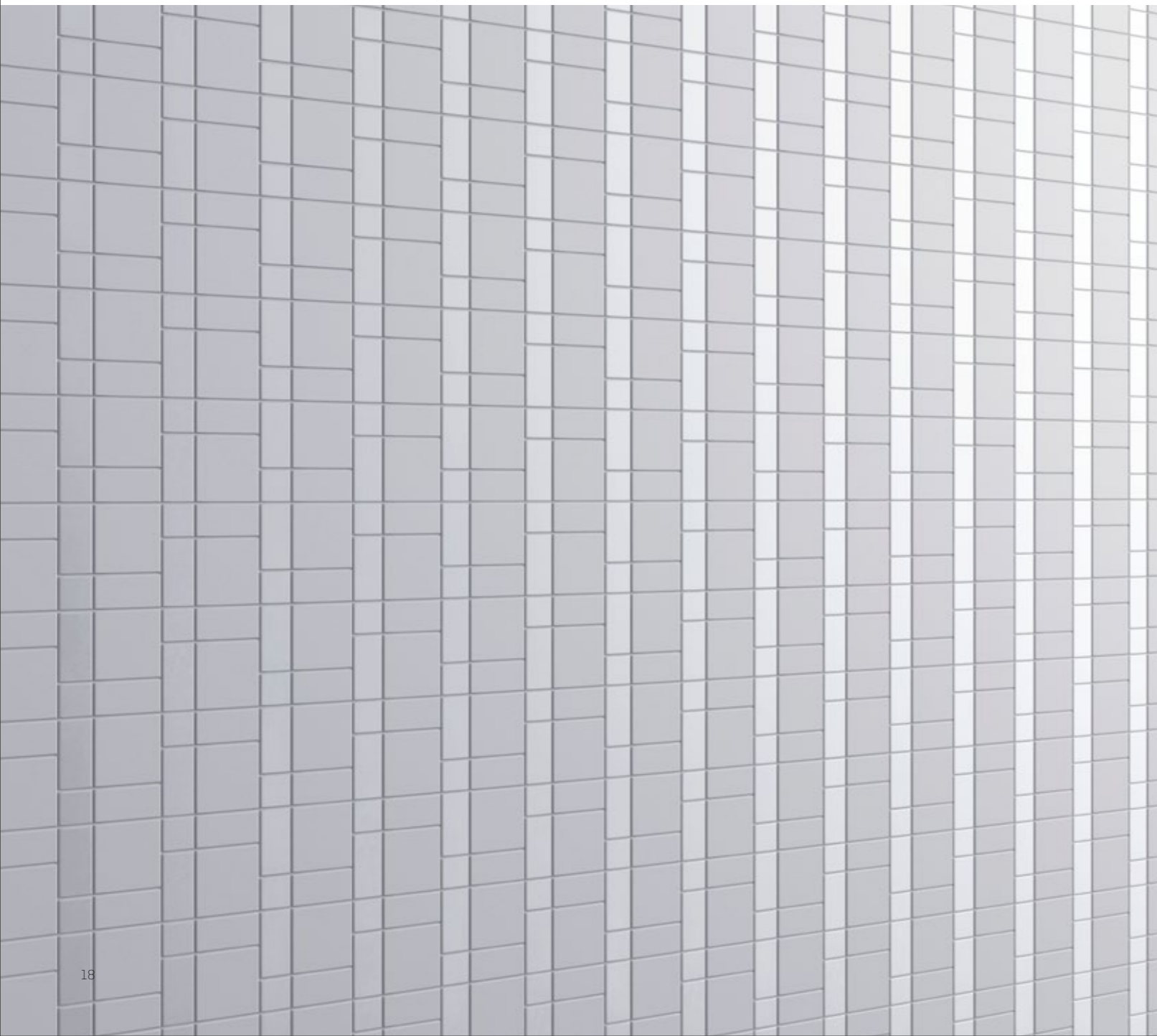
body showering experience. The hand shower comes with the standard built-in Aqua POWER pressure booster, which ensures an indulging shower experience even when the water pressure is low. The showerhead is also extremely easy to clean.



# TILES

Beautiful and modern S200 LINE tiles, specifically designed for this collection, feature dynamic vertical patterns that make even smaller bathrooms feel spacious and attractive.

The S200 LINE tiles draw on INAX's hundred-years' heritage and passion in aesthetic and functional tiles production. They are inspired by a forest of bamboos, which is a good luck symbol of life and growth in Japan for being hard to break and fast to grow. Available in four colors and five patterns, they will let you design the fully coordinated bathroom to your taste.



Designed bathroom featuring S200 LINE  
Tile: Special Order Pattern 2

Tile: Standard Pattern

S200 LINE  
PRODUCT OVERVIEW



**ONE-PIECE TOILET**  
W 372 / D 720 / H 680 mm

- AQUA CERAMIC prevents dirt from sticking
- Rimless realizes one-sweep cleaning inside the bowl
- Skirt design is easy to clean
- Water-saving dual flushing system, 4.5L / 3.0L
- Powerful vortex flush
- Soft close seat and seat cover
- Wider seat area for additional comfort



**CLOSE COUPLED TOILET**  
W 372 / D 720 / H 740 mm

- AQUA CERAMIC prevents dirt from sticking
- Rimless realizes one-sweep cleaning inside the bowl
- Skirt design is easy to clean
- Water-saving dual flushing system, 4.5L / 3.0L
- Powerful vortex flush
- Soft close seat and seat cover
- Wider seat area for additional comfort



**SEMI-COUNTERTOP BASIN**  
W 530 / D 435 / H 170 mm

- AQUA CERAMIC prevents dirt from sticking
- Deep basin for multi-purpose use



**WALL-HUNG BASIN**  
W 530 / D 435 / H 503 mm

- AQUA CERAMIC prevents dirt from sticking
- Deep basin for multi-purpose use



**BASIN MIXER**  
W 46 / D 153 / H 151 mm

- Handling with smooth and effortless precision and ease of use
- Hidden outlet makes appearance sophisticated
- Eco Care with aerator, water-saving
- Adjustable-angle aerator



**EXPOSED SHOWER SYSTEM**  
W 318 / D 150 / H 1336 mm

- Wide overhead shower for wider coverage and comfort
- Hand shower with Aqua POWER pressure booster
- Top of the body can be used as a tray
- Movable shower holder
- Soft hose flows well and is easy to clean
- Intuitive shower diverter

TILES



**WHITE** Standard Pattern  
INAX-300 / LTC-11  
SIZE / PC 300 × 300 mm  
THICKNESS 7mm



**GRAY** Standard Pattern  
INAX-300 / LTC-12  
SIZE / PC 300 × 300 mm  
THICKNESS 7mm



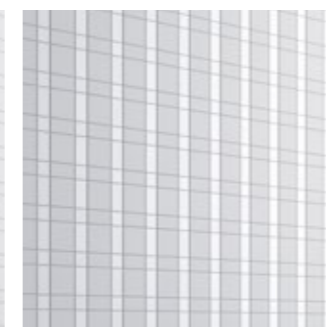
**WHITE (NO LUSTER)** Standard Pattern  
INAX-300 / LTC-13  
SIZE / PC 300 × 300 mm  
THICKNESS 7mm



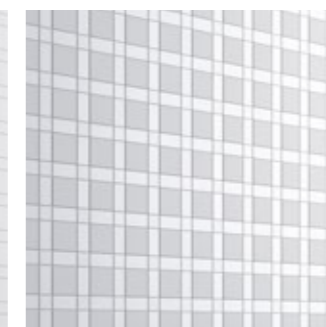
**IVORY** Standard Pattern  
INAX-300 / LTC-14  
SIZE / PC 300 × 300 mm  
THICKNESS 7mm



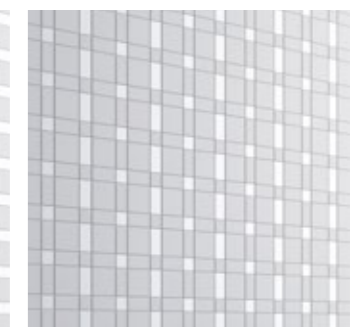
Special Order Pattern 1



Special Order Pattern 2



Special Order Pattern 3



Special Order Pattern 4



INAX.COM

Version 1.3 | 2020.12.25  
Printed in Japan

